



Featured Winter Solutions by Pioneer

Available in USA

- Hi-Vis Heated Nano Bomber Jackets (Models 5408AU, 5409AU)
- Heated Softshell Jackets (Models 5432U, 5433U, 5431U)
- Women's Heated Softshell Jacket (Model 5451U)
- Heated Fleece Hoodie Jacket with Detachable Hood (Model 5448U)
- Hi-Vis Waterproof 2-in-1 Safety Bomber (Model 5209U)
- Hi-Vis Waterproof Insulated Safety Bomber (Model 5208U)
- Hi-Vis Reversible Safety Jacket & Detachable Hood (Models 5771U, 5771HU)

Available in Canada

- Hi-Vis Heated Insulated Safety Jackets (Models 5407, 5408, 5409)
- Heated Insulated Safety Vests (Models 5417, 5418, 5419)
- Heated Softshell Jacket (Model 5431)
- Hi-Vis Reversible Safety Jackets & Detachable Hoods (Models 5770, 5770H, 5771, 5771H)
- Hi-Vis FR Flash-Gard Insulated PU Rainwear (Models 5884, 5885)

Contact your SureWerx Distributor or Customer Service Team for more information:

USA

Toll Free Tel: 1-800-323-7402
Fax: 847-717-8419
email: orders.usa@surewerx.com

Western Canada & Territories

Sales Tel: 604-523-7600
Toll Free Tel: 1-800-472-7685
email: sales@surewerx.com

Eastern Canada

Sales Tel: 905-565-8661
Toll Free Tel: 1-800-387-3879
email: salesod@surewerx.com



surewerx.com



Hi-Vis Heated Nano Bomber Jackets

These heated safety bomber jackets feature 4 temperature settings for adjustable comfort, and the premium insulation provides long-lasting warmth even in the coldest weather extremes.

Key Features and Benefits:

- Multi-panel CNT (Carbon Nanotube Technology) heating elements generate active warmth across core body areas
- Easy-to-use LED switch powers ON/OFF and four separate heat settings
- Includes a USB port to connect to a rechargeable power bank (**power bank not included**)
- Made with premium 120 GSM insulation with extra-soft taffeta lining
- 5408AU — ANSI/ISEA 107-2020 Class 2 Type P and R
- Premium StarTech® reflective tape provides maximum visibility in all weather and light conditions
- Oxford polyester material with PU-coated shell is waterproof and windproof
- Double-stitched and heat-sealed seams provide durability and maximum water resistance
- 3-pc detachable hood to protect you from the elements
- Entire garment is machine washable

#5408AU
(V1210160U)

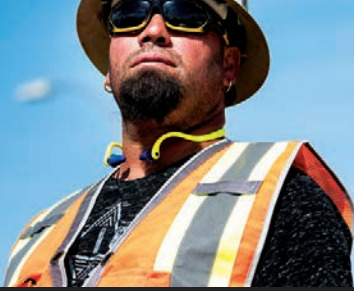


#5409AU
(V1210170U)



PROD. NO.	MOD. NO.	COLOR	SIZE RANGE
V1210160U	5408AU	HI-VIS YELLOW/GREEN	S-4XL
V1210170U	5409AU	BLACK	S-4XL

See next page for information on temperature settings



Temperature Control

The below chart is a guideline. Your results can vary based on the age and quality of the power bank used, outside temperatures, and your own body heat. Test your power pack to ensure the length of performance with this jacket.

POWER BANK CAPACITY (mAh)	HOURS OF KEEPING WARM			
	SETTINGS			
	COMFORT 100.4°F	COZY 107.6°F	WARM 114.8°F	HOT 122°F
5,000	4.5	3.5	2.5	2
10,000	7.5	6.5	5	4
15,000	10.5	9.5	7.5	6
20,000	13.5	12.5	10	8
25,000	16.5	15	12.5	10

New 3RD Generation CNT Heating Elements

The heating elements are extremely thin (5 micron), and made from Carbon Nanotube Technology. CNT elements are soft-to-hand touch, flexible with no wire or metal feeling, and are wash friendly.

The heat sensor is strategically located to give an accurate measurement of the temperature, to prevent over or under heating.



*Based on 18W Quick-charge 25,000 mAh power bank.



4 HEAT LEVELS



CARBON NANOTUBE TECHNOLOGY (CNT)



MULTI-HEATING ZONES



CONNECTS TO USB POWER BANK



UP TO 16.5 HOURS*



100% WATERPROOF & WINDPROOF



MACHINE WASHABLE



Heated Softshell Jacket

Key Features and Benefits:

- Three-layer laminated softshell fabric: 96% polyester, 4% elastane + TPU membrane + polar fleece
- Comfortable four-way stretch material offers exceptional mobility
- Water repellent and breathable
- Fully polyester taffeta-lined
- 3rd generation Nano-Carbon heating technology
- Easy-to-operate control button for switching between 4 settings
- 3 heating panels to keep your core warm: 2 front, 1 back panel (**USB power bank not included**)
- Contemporary cut and fit
- Waterproof front zipper and chest pocket zipper
- Two roomy slash pockets and one inner pocket
- Detachable hood with toggle adjuster
- Drawcord and toggle at bottom hem



4 HEAT LEVELS



CARBON NANOTUBE TECHNOLOGY (CNT)



MULTI-HEATING ZONES



CONNECTS TO USB POWER BANK*



UP TO 18 HOURS



MACHINE WASHABLE



*USB power bank not included

PROD. NO.	MOD. NO.	COLOR	SIZE
V1210280U	5432U	NAVY	S-4XL
V1210290U	5433U	DARK RED	S-4XL
V1210370U	5431U	BLACK	S-4XL

See next page for information on temperature settings



surewerx.com

325 Corporate Drive
Elgin, IL 60123
USA

Toll Free Tel: 1-800-323-7402
Fax: 847-717-8419
email: orders.usa@surewerx.com

Back to Page 1



Temperature Control

The below chart is a guideline. Your results can vary based on the age and quality of the power bank used, outside temperatures, and your own body heat. Test your power pack to ensure the length of performance with this jacket.

POWER BANK CAPACITY (mAh)	HOURS OF KEEPING WARM			
	SETTINGS			
	COMFORT 100.4°F	COZY 107.6°F	WARM 114.8°F	HOT 122°F
5,000	4.5	3.5	2.5	2
10,000	7.5	6.5	5	4
15,000	10.5	9.5	7.5	6
20,000	13.5	12.5	10	8
25,000	16.5	15	12.5	10

New 3RD Generation CNT Heating Elements

The heating elements are extremely thin (5 micron), and made from Carbon Nanotube Technology. CNT elements are soft-to-hand touch, flexible with no wire or metal feeling, and are wash friendly.

The heat sensor is strategically located to give an accurate measurement of the temperature, to prevent over or under heating.



*Based on 18W Quick-charge 25,000 mAh power bank.



4 HEAT LEVELS



CARBON NANOTUBE TECHNOLOGY (CNT)



MULTI-HEATING ZONES



CONNECTS TO USB POWER BANK



UP TO 16.5 HOURS*



100% WATERPROOF & WINDPROOF



MACHINE WASHABLE



WOMEN'S HEATED SOFTSHELL JACKET

These stylish heated softshell jackets are made with 4-way stretch material for extra comfort and an easy-to-operate control button that toggles between multiple heat settings for long-lasting warmth.

Key Features and Benefits:

- Three-layer laminated softshell fabric: 96% polyester, 4% elastane + TPU membrane + polar fleece
- Comfortable four-way stretch material offers exceptional mobility
- Water-repellent and breathable
- Fully polyester taffeta-lined
- 3rd generation Nano-Carbon heating technology
- Easy-to-operate control button for switching between 4 settings
- 3 heating panels to keep your core warm: 2 front, 1 back panel (USB power bank not included)
- Tailored for a women's fit
- Waterproof front zipper and chest pocket zipper
- Two roomy slash pockets and one inner pocket
- Detachable hood with toggle adjuster
- Drawcord and toggle at bottom hem



PROD. NO.	MOD. NO.	COLOR	SIZE RANGE
V3210570U	5451U	Black	XS-4XL

See next page for information on temperature settings



surewerx.com

325 Corporate Drive
Elgin, IL 60123
USA

Toll Free Tel: 1-800-323-7402
Fax: 847-717-8419
email: orders.usa@surewerx.com



Temperature Control

There are 4 heat settings, 100.4, 109.4, 118.4, and 127.4°F, indicated by colored LEDs. Select your heat setting by pressing the main switch button. This jacket is compatible with various power banks; refer to the chart below for heating capacity and how many hours of warmth this jacket will provide.



4 HEAT LEVELS



CARBON NANOTUBE TECHNOLOGY (CNT)



MULTI-HEATING ZONES



CONNECTS TO USB POWER BANK



UP TO 18 HOURS*



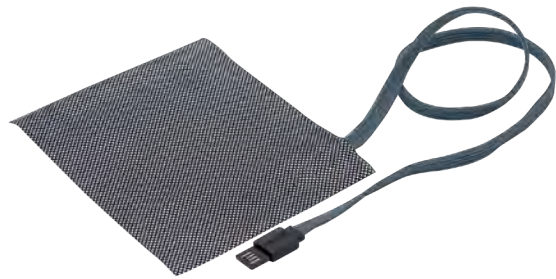
MACHINE WASHABLE

POWER BANK CAPACITY (mAh)	HOURS OF KEEPING WARM			
	SETTINGS			
	COMFORT 100.4°F	COZY 109.4°F	WARM 118.4°F	HOT 127.4°F
5,000	6	5	4	3
10,000	9	8	7	6
15,000	12	11	10	9
20,000	15	14	13	12
25,000	18	17	16	15

New 3RD Generation CNT Heating Elements

The heating elements are extremely thin (5 micron), and made from Carbon Nanotube Technology. CNT elements are soft-to-hand touch, flexible with no wire or metal feeling, and are wash friendly.

The heat sensor is strategically located to give an accurate measurement of the temperature, to prevent over or under heating.



*Based on 25,000 mAh power bank



Heated Fleece Hoodie Jacket w/ Detachable Hood

Heated polar fleece jacket powered by 3rd generation Nano Carbon technology delivers long-lasting warmth at the touch of a button to keep you comfortable and productive even in the coldest working conditions

Key Features and Benefits:

- 3rd generation Nano Carbon technology delivers heat to 3 separate zones for complete coverage
- Easy-to-operate control button includes 4 temperature settings for a wide range of outdoor weather conditions
- Ultra-soft and breathable polar fleece with quilted nylon panel delivers ultimate comfort without restricting mobility
- Constructed with a durable heavy-duty mesh lining
- Features a zippered and detachable 3-pc hood for added versatility and style
- Includes two roomy slash pockets with zipper closure and hand-warming fleece
- Comes complete with inner pocket to hold power bank (power source not included)
- Jacket is machine washable



PROD. NO.	MOD. NO.	COLOR	SIZE
V3210440U	5448U	Charcoal	S-5XL

See next page for information on temperature settings



surewerx.com

325 Corporate Drive
Elgin, IL 60123
USA

Toll Free Tel: 1-800-323-7402
Fax: 847-717-8419
email: orders.usa@surewerx.com

Back to Page 1



Temperature Control

The below chart is a guideline. Your results can vary based on the age and quality of the power bank used, outside temperatures, and your own body heat. Test your power pack to ensure the length of performance with this jacket.

POWER BANK CAPACITY (mAh)	HOURS OF KEEPING WARM			
	SETTINGS			
	COMFORT 100.4°F	COZY 107.6°F	WARM 114.8°F	HOT 122°F
5,000	4.5	3.5	2.5	2
10,000	7.5	6.5	5	4
15,000	10.5	9.5	7.5	6
20,000	13.5	12.5	10	8
25,000	16.5	15	12.5	10



4 HEAT LEVELS



CARBON NANOTUBE TECHNOLOGY (CNT)



MULTI-HEATING ZONES



CONNECTS TO USB POWER BANK



UP TO 18 HOURS*



MACHINE WASHABLE

New 3RD Generation CNT Heating Elements

The heating elements are extremely thin (5 micron), and made from Carbon Nanotube Technology. CNT elements are soft-to-hand touch, flexible with no wire or metal feeling, and are wash friendly.

The heat sensor is strategically located to give an accurate measurement of the temperature, to prevent over or under heating.



*Based on 25,000 mAh power bank



Hi-Vis Waterproof 2-in-1 Safety Bomber

This hi-vis waterproof 2-in-1 Bomber Jacket is designed to keep you safe, dry, and warm in the toughest job conditions. Ideal for those working in dangerous settings where visibility is the highest priority, including EMS, construction, and traffic control.



Key Features and Benefits:

- PU-coated oxford polyester shell is both waterproof and windproof
- Premium StarTech® reflective tape provides maximum visibility
- Removeable inner fleece liner for flexible layering options
- Embroidery access zipper on the inside
- Includes 2 large front zippered pockets, mobile phone pocket, 2 radiophone clip straps and an inside chest pocket
- Detachable snap hood with pouch for storage
- Features comfort collar, fleece lining, and elastic ribbed cuffs and waist
- Black bottom conceals the appearance of dirt and grime
- Made with a full front zipper
- Outer jacket ANSI/ISEA 107-2020 Class 3 Type P and R



#5209U
(V1130460U)



PROD. NO.

V1130460U

MOD. NO.

5209U

COLOR

HI VIS YELLOW/BLACK

SIZE RANGE

S – 4XL



surewerx.com

325 Corporate Drive
Elgin, IL 60123
USA

Toll Free Tel: 1-800-323-7402
Fax: 847-717-8419
email: orders.usa@surewerx.com



Hi-Vis Waterproof Insulated Safety Bomber

This bomber-style jacket lets you stand out and be seen while also keeping you warm and dry in cold and wet working conditions

Key Features and Benefits:

- 160 GSM quilted poly insulation is ideal for working in frigid conditions
- PU-coated oxford polyester shell is both waterproof and windproof
- Premium StarTech® reflective tape provides maximum visibility
- Includes 2 large front zippered pockets, mobile phone pocket, 2 radiophone clip straps and an inside chest pocket
- Detachable snap hood with pouch for storage
- Features comfort collar, fleece lining, and elastic ribbed cuffs and waist
- Black bottom conceals the appearance of dirt and grime
- Made with a full front zipper
- ANSI/ISEA 107-2020, Class 3 Type P and R



#5208U
(V1130560U)



PROD. NO.	MOD. NO.	COLOR	SIZE RANGE
V1130560U	5208U	HI-VIS YELLOW/GREEN	S-4XL



surewerx.com

325 Corporate Drive
Elgin, IL 60123
USA

Toll Free Tel: 1-800-323-7402
Fax: 847-717-8419
email: orders.usa@surewerx.com

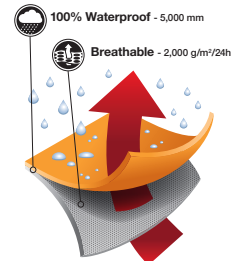


Hi-Vis Reversible Safety Jacket and Detachable Hood

This jacket combines comfort and safety with maximum versatility. The reversible style features hi-vis colors with reflective tape on one side with a more fashionable black side to wear when the job is done.

Key Features and Benefits:

- Hi-vis side made of premium 300D polyester oxford with PU coating
- Black side made of 380T nylon fabric with 120 g soft polyester padding
- ANSI/ISEA 107-2020 Class 3 Type P and R
- Premium StarTech® reflective tape provides maximum visibility even in low lit working conditions
- Taped and heat-sealed seams contribute to a waterproof and windproof garment
- Made with 2 bottom pockets on both sides of jacket
- Ideal for traffic personnel, law enforcement, and public safety
- Detachable reversible hood with zipper and draw-cord sold separately (model 5771HU)



#5771HU
(V1140461U)



#5771U
(V1140460U)



PROD. NO.	MOD. NO.	COLOR	SIZE RANGE
V1140460U	5771U	HI-VIS YELLOW	S – 4XL
V1140461U	5771HU	HI-VIS YELLOW	O/S



Hi-Vis Heated Insulated Safety Jackets

These heated safety bomber jackets feature 4 temperature settings for adjustable comfort and the premium insulation provides long-lasting warmth even in the coldest weather extremes.



Key Features and Benefits:

- FR-treated preshrunk cotton material (400 GSM) provides optimum warmth and comfort
- Multi-panel CNT (Carbon Nanotube Technology) heating elements generate active warmth across core body areas
- Easy-to-use LED switch powers ON/OFF and four separate heat settings
- Includes a USB port to connect to a rechargeable power bank (power bank not included)
- Made with premium 180 GSM insulation with extra-soft taffeta lining
- Premium StarTech® reflective tape provides maximum visibility in all weather and light conditions
- Oxford polyester material with PU-coated shell is waterproof and windproof
- Double-stitched and heat-sealed seams provide durability and maximum water resistance
- 3-pc detachable hood to protect you from the elements
- Entire garment is machine washable
- CSA Z96-22 Class 2 Level 2 (Class 1 for black)
- ANSI/ISEA 107-2020 Class 2 Type P and R (Class 1 for black)



PROD. NO.	MOD. NO.	COLOUR	SIZE RANGE
V1210150	5407	HI-VIS ORANGE	S – 4XL
V1210160	5408	HI-VIS YELLOW/GREEN	S – 4XL
V1210170	5409	BLACK	S – 4XL

See next page for information on temperature settings



surewerx.com

Western Canada & Territories
 Sales Tel: 604-523-7600
 Toll Free Tel: 1-800-472-7685
 email: sales@surewerx.com

Eastern Canada
 Sales Tel: 905-565-8661
 Toll Free Tel: 1-800-387-3879
 email: salesod@surewerx.com

[Back to Page 1](#)



Temperature Control

There are 4 heat settings, 38, 43, 48, and 53°C, indicated by coloured LEDs. Select your heat setting by pressing the main switch button. This jacket is compatible with various power banks, refer to the chart below for heating capacity and how many hours of warmth this jacket will provide.

POWER BANK CAPACITY (mAh)	HOURS OF KEEPING WARM			
	SETTINGS			
	COMFORT 38°C	COZY 43°C	WARM 48°C	HOT 53°C
5,000	6	5	4	3
10,000	9	8	7	6
15,000	12	11	10	9
20,000	15	14	13	12
25,000	18	17	16	15

New 3RD Generation CNT Heating Elements

The heating elements are extremely thin (5 micron), and made from Carbon Nanotube Technology. CNT elements are soft-to-hand touch, flexible with no wire or metal feeling, and are wash friendly.

The heat sensor is strategically located to give an accurate measurement of the temperature, to prevent over or under heating.



*Based on 25,000 mAh power bank.



4 HEAT LEVELS



CARBON NANOTUBE TECHNOLOGY (CNT)



MULTI-HEATING ZONES



CONNECTS TO USB POWER BANK



UP TO 18 HOURS*



100% WATERPROOF & WINDPROOF



MACHINE WASHABLE



Heated Insulated Safety Vests

These heated safety vests feature 4 temperature settings for adjustable comfort, and the premium insulation provides long-lasting warmth even in the coldest weather extremes.

Key Features and Benefits:

- Multi-panel CNT (Carbon Nanotube Technology) heating elements generate active warmth across core body areas
- Easy-to-use LED switch powers ON/OFF and four separate heat settings
- Includes a USB port to connect to a rechargeable power bank (power bank not included)
- Made with premium 120 GSM insulation with extra-soft taffeta lining
- CSA Z96-22 Class 2 Level 2 (Class 1 for black)
- ANSI/ISEA 107-2020 Class 2 Type P and R (Class 1 for black)
- Premium StarTech® reflective tape provides maximum visibility in all weather and light conditions
- Oxford polyester material with PU coated shell is waterproof and windproof
- Double-stitched and heat-sealed seams provide durability and maximum water resistance
- Includes five total pockets and radiophone clip strap for maximum versatility
- Entire garment is machine washable



PROD. NO.	MOD. NO.	COLOUR	SIZE RANGE
V1210250	5417	HI-VIS ORANGE	S-4XL
V1210260	5418	HI-VIS YELLOW	S-4XL
V1210270	5419	BLACK	S-4XL

See next page for information on temperature settings



surewerx.com

Western Canada & Territories
 Sales Tel: 604-523-7600
 Toll Free Tel: 1-800-472-7685
 email: sales@surewerx.com

Eastern Canada
 Sales Tel: 905-565-8661
 Toll Free Tel: 1-800-387-3879
 email: salesod@surewerx.com

[Back to Page 1](#)



Temperature Control

There are 4 heat settings, 38, 43, 48, and 53°C, indicated by coloured LEDs. Select your heat setting by pressing the main switch button. This jacket is compatible with various power banks, refer to the chart below for heating capacity and how many hours of warmth this jacket will provide.

POWER BANK CAPACITY (mAh)	HOURS OF KEEPING WARM			
	SETTINGS			
	COMFORT 38°C	COZY 43°C	WARM 48°C	HOT 53°C
5,000	6	5	4	3
10,000	9	8	7	6
15,000	12	11	10	9
20,000	15	14	13	12
25,000	18	17	16	15

New 3RD Generation CNT Heating Elements

The heating elements are extremely thin (5 micron), and made from Carbon Nanotube Technology. CNT elements are soft-to-hand touch, flexible with no wire or metal feeling, and are wash friendly.

The heat sensor is strategically located to give an accurate measurement of the temperature, to prevent over or under heating.



*Based on 25,000 mAh power bank.



4 HEAT LEVELS



CARBON NANOTUBE TECHNOLOGY (CNT)



MULTI-HEATING ZONES



CONNECTS TO USB POWER BANK



UP TO 18 HOURS*



100% WATERPROOF & WINDPROOF



MACHINE WASHABLE



Heated Softshell Jacket

These stylish heated softshell jackets are made with 4-way stretch material for extra comfort, and an easy-to-operate control button that toggles between multiple heat settings for long-lasting warmth

Key Features and Benefits:

- Three-layer laminated softshell fabric provides maximum performance even in extreme outdoor conditions
- Premium material is wind- and water-resistant and features a breathable design
- Made with four-way stretch material for maximum freedom of movement and mobility
- Added layer of poly insulation provides unsurpassed warmth and comfort
- Nano-Carbon technology generates heat to three separate zones
- Easy-to-operate control button switches between four temperature settings
- Multiple storage options include two roomy slash pockets and one inner pocket
- Includes detachable hood with toggle adjuster
- Jacket is machine washable
- Added polyester insulation for increased warmth
- Comes with a USB port to connect to a rechargeable power bank (power bank not included — must be purchased separately)



PROD. NO.	MOD. NO.	COLOUR	SIZE
V3210370	5431	Black	S-5XL

See next page for information on temperature settings



surewerx.com

Western Canada & Territories
 Sales Tel: 604-523-7600
 Toll Free Tel: 1-800-472-7685
 email: sales@surewerx.com

Eastern Canada
 Sales Tel: 905-565-8661
 Toll Free Tel: 1-800-387-3879
 email: salesod@surewerx.com

[Back to Page 1](#)



Temperature Control

There are 4 heat settings, 38, 43, 48, and 53°C, indicated by coloured LEDs. Select your heat setting by pressing the main switch button. This jacket is compatible with various power banks, refer to the chart below for heating capacity and how many hours of warmth this jacket will provide.

POWER BANK CAPACITY (mAh)	HOURS OF KEEPING WARM			
	SETTINGS			
	COMFORT 38°C/ 100.4°F	COZY 43°C/ 109.4°F	WARM 48°C/ 118.4°F	HOT 53°C/ 127.4°F
5,000	6	5	4	3
10,000	9	8	7	6
15,000	12	11	10	9
20,000	15	14	13	12
25,000	18	17	16	15



4 HEAT LEVELS



CARBON NANOTUBE TECHNOLOGY (CNT)



MULTI-HEATING ZONES



CONNECTS TO USB POWER BANK



UP TO 18 HOURS*

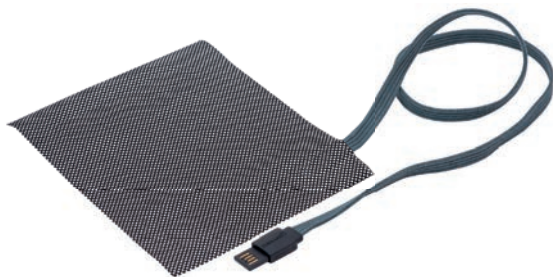


MACHINE WASHABLE

New 3RD Generation CNT Heating Elements

The heating elements are extremely thin (5 micron), and made from Carbon Nanotube Technology. CNT elements are soft-to-hand touch, flexible with no wire or metal feeling, and are wash friendly.

The heat sensor is strategically located to give an accurate measurement of the temperature, to prevent over or under heating.



*Based on 25,000 mAh power bank



surewerx.com

Western Canada & Territories

Sales Tel: 604-523-7600
Toll Free Tel: 1-800-472-7685
email: sales@surewerx.com

Eastern Canada

Sales Tel: 905-565-8661
Toll Free Tel: 1-800-387-3879
email: salesod@surewerx.com

[Back to Page 1](#)



Hi-Vis Reversible Safety Jacket and Detachable Hood

This jacket combines comfort and safety with maximum versatility. The reversible style features hi-vis colors with reflective tape on one side with a more fashionable black side to wear when the job is done.

Key Features and Benefits:

- Hi-vis side made of premium 300D polyester oxford with PU coating
- Black side made of 380T nylon fabric with 120 g soft polyester padding
- CSA Z96-22 Class 2 Level 2 (becomes Class 3 when worn with hi-vis pant featuring reflective leg bands) and ANSI/ISEA 107-2020 Class 3 Type P and R
- Premium StarTech® reflective tape provides maximum visibility even in low lit working conditions
- Taped and heat-sealed seams contribute to a waterproof and windproof garment
- Made with 2 bottom pockets on both sides of jacket
- Ideal for traffic personnel, law enforcement, and public safety
- Detachable reversible hoods with zipper and draw-cord sold separately (models 5770H and 5771H)



PROD. NO.	MOD. NO.	COLOUR	SIZE RANGE
V1140450	5770	HI-VIS ORANGE	S – 4XL
V1140460	5771	HI-VIS YELLOW	S – 4XL
V1140451	5770H	HI-VIS ORANGE	O/S
V1140461	5771H	HI-VIS YELLOW	O/S



Hi-Vis FR Flash-Gard® Insulated PU Rainwear

Key Features and Benefits:

- FR and ARC Flash PU on FR and ARC Flash Cotton
- Insulation 240 GSM 75% Modacrylic, 25% Polyester
- 6.5 oz. FR cotton lining
- Meets CGSB 155.20-2017 Rainwear Standard
- Meets ASTM F2733-17 Standard Specification for Flame Resistant Rainwear for Protection Against Flame Hazards
- Meets ASTM F1891-19 for Arc Flash tested as per ASTM F1959/1959M-14
- Average Thermal Protective Performance (TPP) value: 23.1 cal/cm²
- ATPV 51 cal/cm² and EBT 57 cal/cm², HAF = 94 %
- ARC 4 Category
- Oil and chemical resistant
- 100% waterproof and windproof
- Heavy-duty and tough 4-way stretch PU
- Premium StarTech® FR reflective tape
- Radio-frequency heat-welded seams

- Extra-large detachable 3-piece hood with reflective stripe and visor flap
- Drawcord for adjusting the shape of the hood
- Full front FR zipper with hook and loop closure storm placket
- Two lower pockets on front with flap and snap closure and one inside storage pocket
- Sleeve with inner elastic cuff
- One inside cellphone pocket
- Double vent holes underarm
- Adjustable bottom hem drawstring for a snug fit

OVERALLS:

- CSA Z96-22 Class 3 Level 2 when worn with CSA Class 2 Level 2 top featuring reflective arm bands and ANSI/ISEA 107-2020 Class E Supplemental Type
- Hook and loop adjustment tab to fit snugly around boot
- One side adjustment on the waist for superior fit
- Storage pocket behind the bib
- Superior FR suspender elastic with adjustment buckle and spreader bar

FLASH-GARD®

FLAME-GARD®

ARC-GARD®

ATPV 51 ARC 4 STAR-TECH FR



JACKET & HOOD:

- CSA Z96-22 Class 2 Level 2 and Class 2 Level FR (becomes Class 3 when worn with FR Hi-Vis pants featuring reflective leg bands) and ANSI/ISEA 107-2020 Class 3 Type P and R



PROD. NO.	MOD. NO.	COLOUR	SIZE RANGE
V3521650	5884	Hi-Vis Orange	S-5XL
V3521750	5885	Hi-Vis Orange	S-5XL